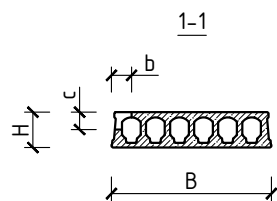
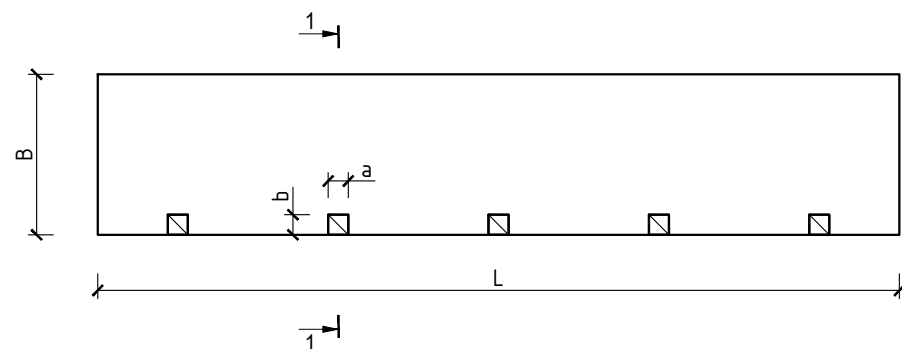
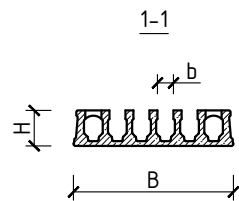
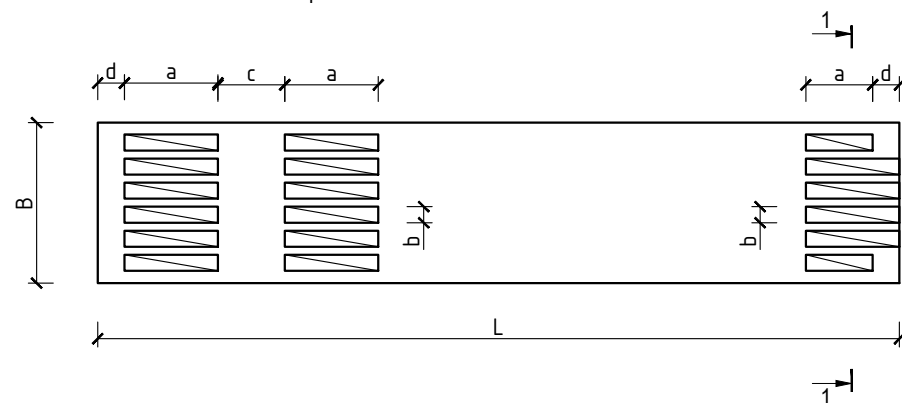


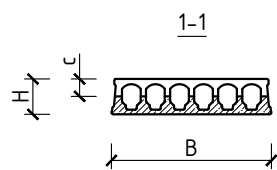
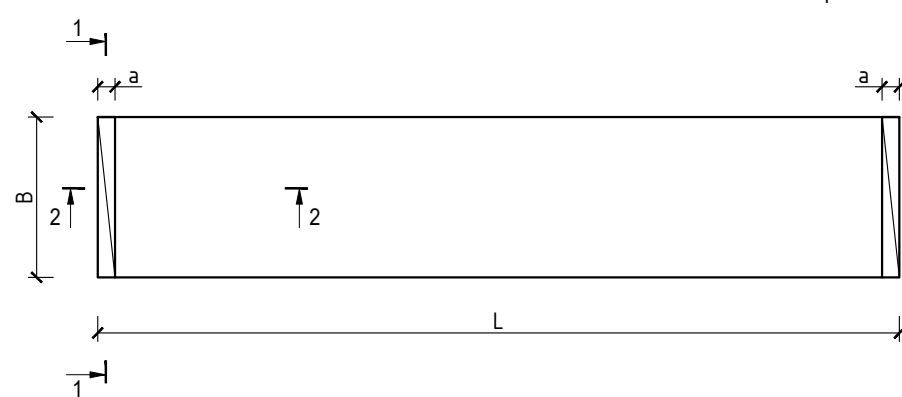
Taskud / õõnsuste osaline avamine  
Partial openings



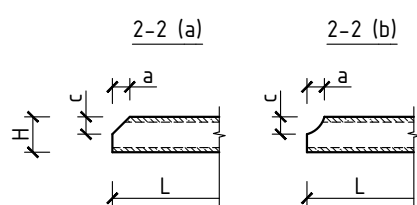
H = 220; 265; 320; 400 (mm)  
 $a_{\min} = 150$  (mm)  
 $b_{\min} = 150$  (mm)  
 $c_{\max} = \frac{1}{2} H$  (mm)



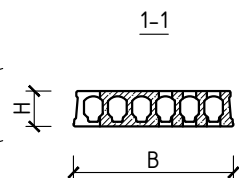
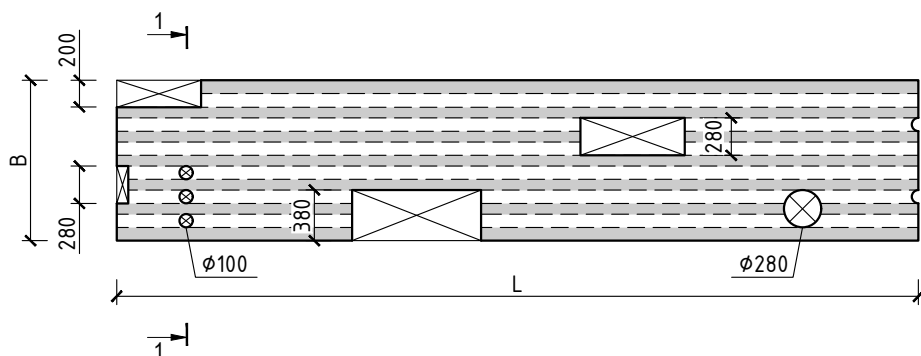
H = 220; 265; 320; 400 (mm)  
 $a_{\max} = 700$  (mm)  
 $b = 120$  (mm)  
 $c = 500 \pm 200$  (mm)  
 $d_{\min} = 200$  (mm)



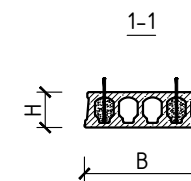
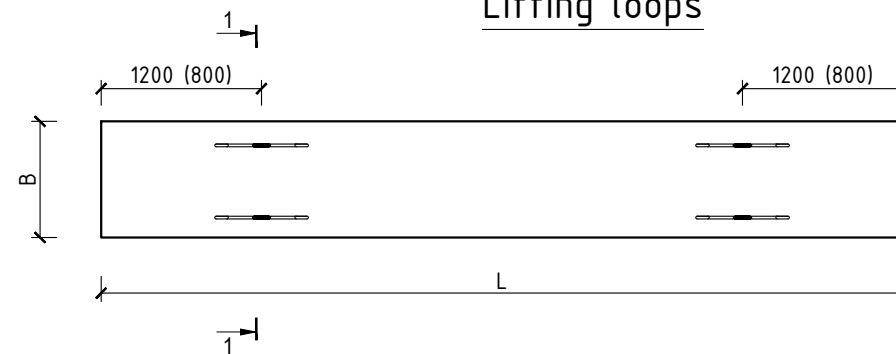
H = 220; 265; 320; 400 (mm)  
 $a_{\max} = \frac{1}{2} H$  (mm)  
 $c_{\max} = \frac{1}{2} H$  (mm)



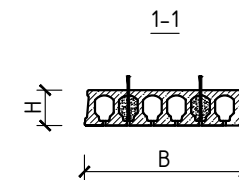
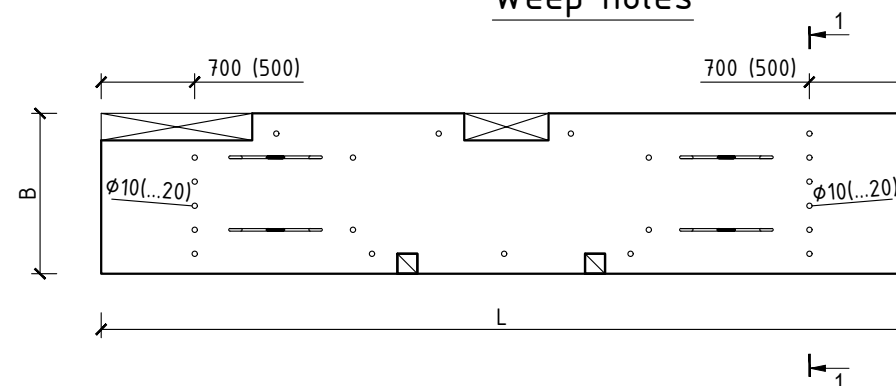
Läbivad avad  
Openings



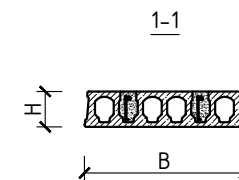
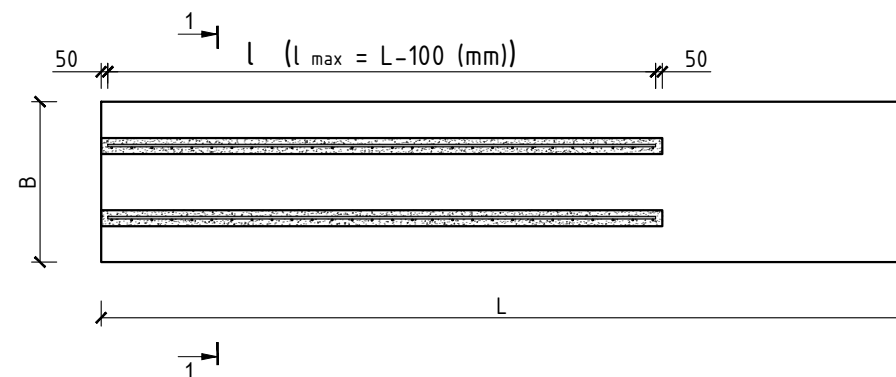
Tõsteaasad  
Lifting loops



Dreeniavad  
Weep holes



Konsoolsete elementide täiendav armeerimine  
Additional reinforcement for console slabs



LEGEND

◻ - ava sügavus max  $\frac{1}{2}$  elemendi kõrgusest  
 recess depth max  $\frac{1}{2}$  slab height

⊗ - läbiv ava  
 hole

	AS Framm Vana-Narva mnt. 8, 74114 Maardu, Eesti <a href="http://www.framm.ee">http://www.framm.ee</a>	Concrete products: E-mail: <a href="mailto:myyk@frammm.ee">myyk@frammm.ee</a> Phone: (+372) 623 0310 Mobile: (+372) 5334 0004
JOONISE NIMETUS / DRAWING NAME Õõnespaneelide tehniline dokumentatsioon 2/2 Hollow core slab technical data 2/2	TOOTE NIMETUS / PRODUCT NAME Eelpingestatud õõnespaneelid Prestressed Hollow Core Slabs	